



Score	Energy rating	Current	Potential
92+	A		
81-91	B		
69-80	C		
55-68	D	68 D	77 C
39-54	E		
21-38	F		
1-20	G		

Hazel Gardens, Edgware

2 Bed Maisonette

Council tax band: TBC Tenure: Assured Shorthold Tenancy

£1,800 per month
TO RENT



297 Hale Lane
Edgware
Middlesex
HA8 7AX

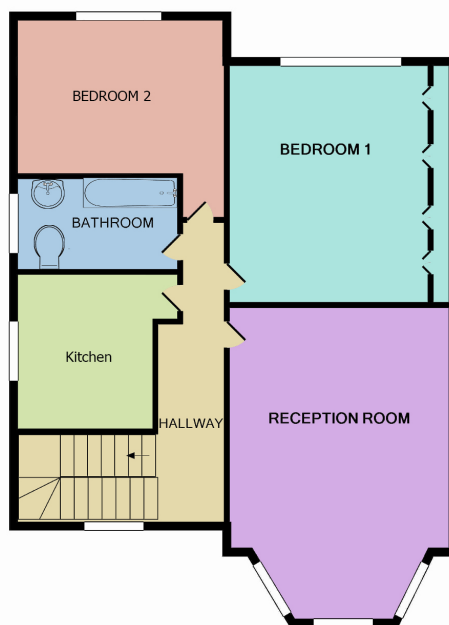
t: 020 8958 8958
f: 020 8958 2300
e: info@groveresidential.co.uk
w: www.groveresidential.co.uk

Company No: 9632012

VAT Reg. No: 217 0421 50

Registered Address: 297 Hale Lane, Edgware, Middlesex, HA8 7AX





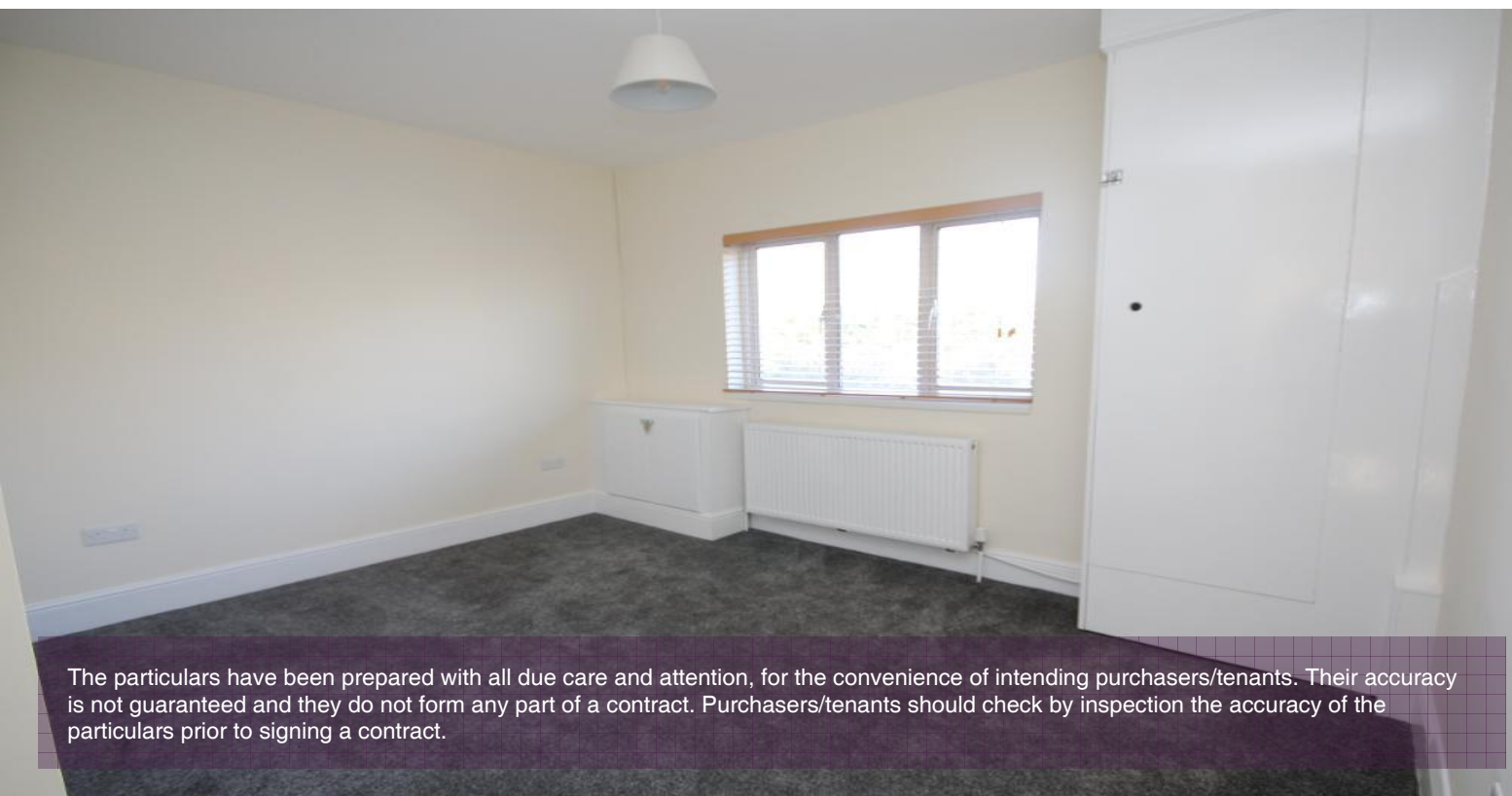
Key Features

- 2 Double Bedrooms
- 1st Floor Maisonette
- Modern Kitchen & Bathroom
- Private Garden
- Lounge/Dining Room
- Storage

Summary

A highly desirable 2 double bedroom first floor maisonette with its own entrance. Set in this well located position on Hazel Gardens within the Eruv and within walking distance to Edgware Station and amenities. View Now to avoid missing out on this stunning apartment !

Score	Energy rating	Current	Potential
92+	A		
81-91	B		
69-80	C		77 C
55-68	D	68 D	
39-54	E		
21-38	F		
1-20	G		



The particulars have been prepared with all due care and attention, for the convenience of intending purchasers/tenants. Their accuracy is not guaranteed and they do not form any part of a contract. Purchasers/tenants should check by inspection the accuracy of the particulars prior to signing a contract.