



Energy Efficiency Rating			
Score	Energy rating	Current	Potential
92+	A		
81-91	B		
69-80	C		77 C
55-68	D		
39-54	E	54 E	
21-38	F		
1-20	G		

Riverdene, Edgware

3 Bed Semi-Detached

Council tax band: E Tenure: Freehold

£540,000 STC
FOR SALE

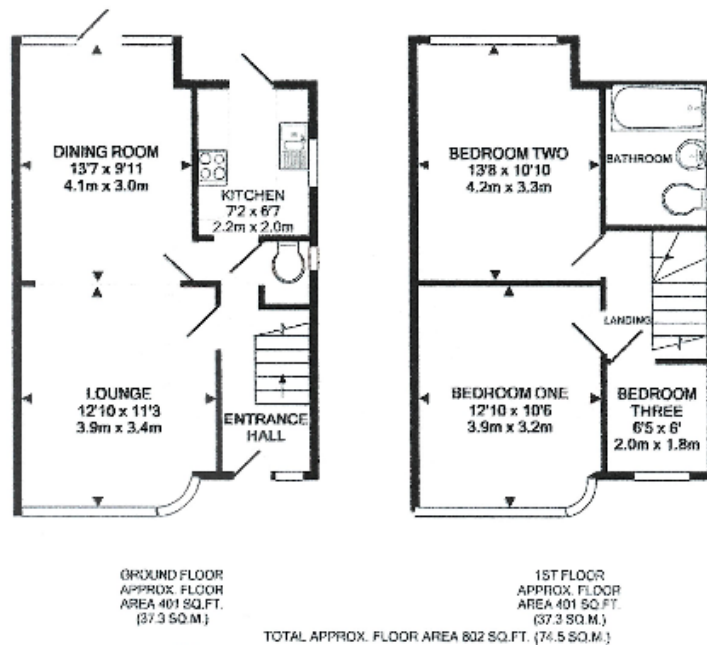


297 Hale Lane
Edgware
Middlesex
HA8 7AX

t: 020 8958 8958
f: 020 8958 2300
e: info@groveresidential.co.uk
w: www.groveresidential.co.uk

Company No: 9632012 VAT Reg. No: 217 0421 50
Registered Address: 297 Hale Lane, Edgware, Middlesex, HA8 7AX





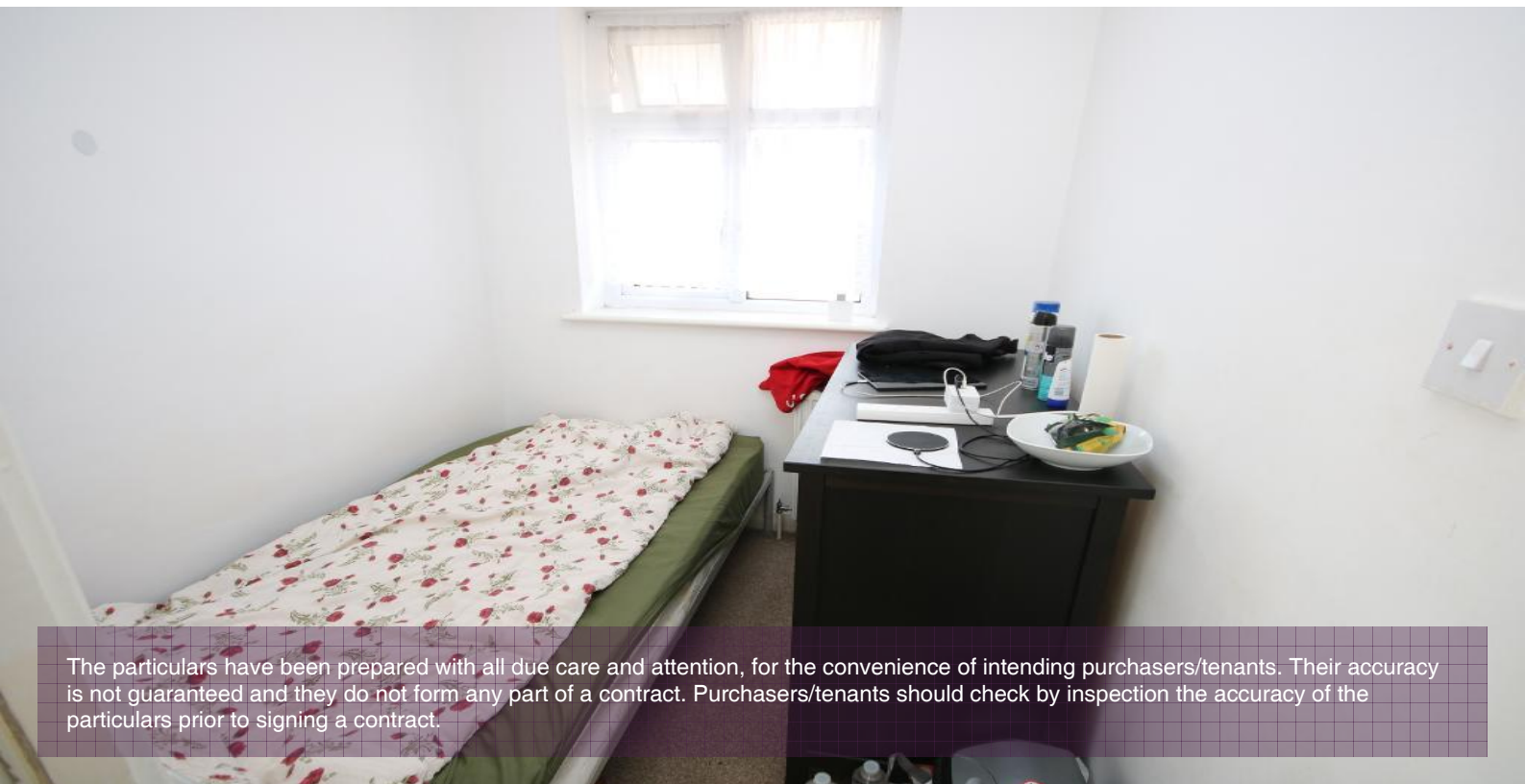
Key Features

- 3 Bedroom Semi Detached Home
- 1 Bedroom Self Contained Flat
- Lounge/Dining Room
- Seperate Kitchen
- Gas Central Heating & Double Glazing
- Private Rear Garden

Summary

CALLING ALL INVESTORS !! A well appointed 3 bedroom semi detached home with a 1 bedroom self contained flat in the garden. There is plenty of scope for extensions stpp. Self contained flat measures approx 31 sqm. Chain Free. View Now via Grove Residential to avoid missing out.

Energy Efficiency Rating			
Score	Energy rating	Current	Potential
92+	A		
81-91	B		
69-80	C		77 C
55-68	D		
39-54	E	54 E	
21-38	F		
1-20	G		



The particulars have been prepared with all due care and attention, for the convenience of intending purchasers/tenants. Their accuracy is not guaranteed and they do not form any part of a contract. Purchasers/tenants should check by inspection the accuracy of the particulars prior to signing a contract.