



Energy Efficiency Rating			
Score	Energy rating	Current	Potential
92+	A		
81-91	B		88 B
69-80	C		
55-68	D	64 D	
39-54	E		
21-38	F		
1-20	G		

Trueman Close, Edgware

2 Bed End Terraced

Council tax band: D Tenure: Freehold

£385,000 STC
FOR SALE



297 Hale Lane
Edgware
Middlesex
HA8 7AX

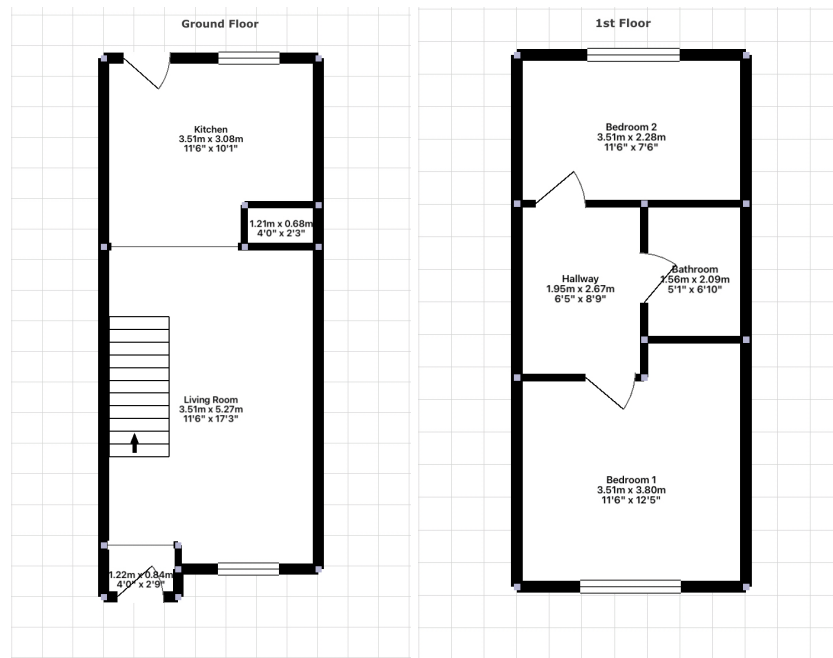
t: 020 8958 8958
f: 020 8958 2300
e: info@groveresidential.co.uk
w: www.groveresidential.co.uk

Company No: 9632012

VAT Reg. No: 217 0421 50

Registered Address: 297 Hale Lane, Edgware, Middlesex, HA8 7AX





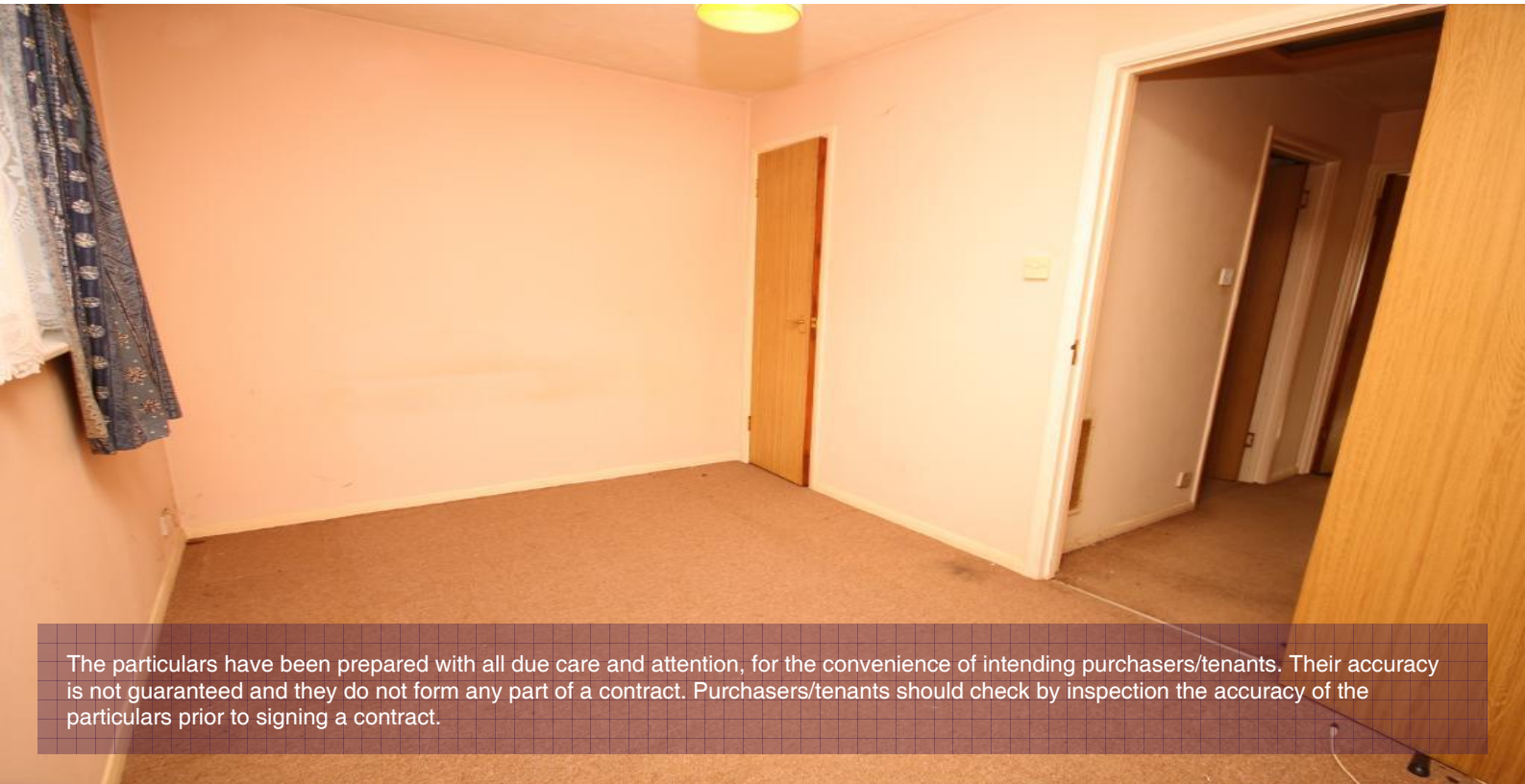
Key Features

- 2 Bedroom End Terraced House
- Lounge/Dining Room
- Kitchen + Bathroom
- 2 Bedrooms
- Freehold
- Private Garden

Summary

A two bedroom end terraced house for sale located in close proximity to travel links and places of worship. Ideal for an investor or first time buyer. The property boasts ample living space, good size kitchen and a private rear garden. Allocated parking space TBC. Chain Free. View Now via sole agents Grove Residential - 0208 958 8958

Energy Efficiency Rating			
Score	Energy rating	Current	Potential
92+	A		
81-91	B		88 B
69-80	C		
55-68	D	64 D	
39-54	E		
21-38	F		
1-20	G		



The particulars have been prepared with all due care and attention, for the convenience of intending purchasers/tenants. Their accuracy is not guaranteed and they do not form any part of a contract. Purchasers/tenants should check by inspection the accuracy of the particulars prior to signing a contract.